

A-DESB01

Double ended shear beam load cell



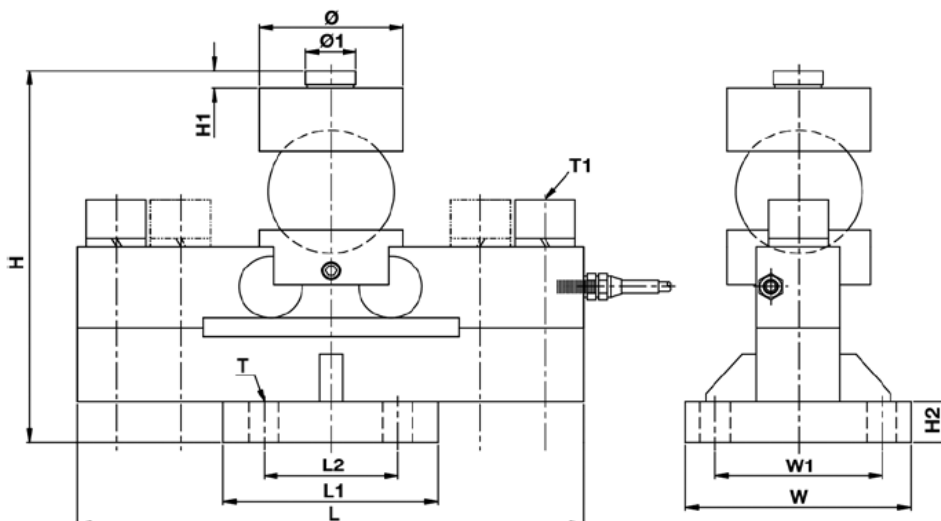
Description

Unique bridge structure, cup and steel ball mounted, Self-resetting and centering, good side force resistance and shock resistance. Moisture proof sealed, ideal for hostile environment, Simple to install, easy to use, good interchangeability suitable for electronic truck scale, railroad scale, hopper scale and various special scales.

Application

- Truck scale
- Railroad scale
- Hopper scale

Main Dimensions and Accessories



CAPACITY		L	L1	L2	H	H1	H2	Ø	Ø1	W	W1	T	T1
10;20 ;25; 30;40t	mm	240	125	80	229.3	11	20	88	30	135	100	4-Ø18	2-M24
	(inch)	9.45	4.92	3.15	8.85	0.43	0.79	3.46	1.18	5.31	3.94		
40;50T	mm	340	160	124	261	11	20	98	40	160	124	4-Ø21	4-M24
	(inch)	13.38	6.30	4.88	10.28	0.43	0.79	3.86	1.57	6.30	4.88		

Specifications

Capacity	10~50t	Input resistance	750±15Ω
Rated output	2.0mV/V±0.1%	Output resistance	702±3Ω
Total error	0.03,C3	Safe overload	150%F.S
Creep in 30 minutes	<±0.02%F.S	Ultimate overload	300%F.S
Temperature effect span	<±0.02%F.S/10℃	Excitation voltage	10V AC/DC
Temperature effect zero	<±0.02%F.S/10℃	Maximum excitation voltage	15V AC/DC
Compensated temperature range	-10~+40℃	Insulation resistance	≥5000MΩ
Operating temperature range	-30~+70℃	Environmental protection	IP68
Zero balance	±1%F.S	Material	Allow steel

Cable: 8m@10t; 10m@15t; 12m/16m@20t&25t&30t&40t; 16m@50t

Wring: +Exc (Red) ; -Exc (Black); +Sig (Green); -Sig (White)